



Jeśli potrzebujesz rozgrzewki



Obejrzyj film

docwiczenia.pl
Kod: M4G9FQ

1 Oblicz.

$$26 + 0 = \underline{\quad\quad} \quad 99 + 1 = \underline{\quad\quad} \quad 0 + 15 = \underline{\quad\quad} \quad 999 + 1 = \underline{\quad\quad}$$

2 Oblicz.

$$5 + 8 = \underline{\quad\quad} \quad 24 + 9 = \underline{\quad\quad} \quad 32 + 25 = \underline{\quad\quad}$$

$$50 + 80 = \underline{\quad\quad} \quad 240 + 90 = \underline{\quad\quad} \quad 320 + 250 = \underline{\quad\quad}$$

$$500 + 80 = \underline{\quad\quad} \quad 2400 + 90 = \underline{\quad\quad} \quad 3200 + 250 = \underline{\quad\quad}$$

$$500 + 800 = \underline{\quad\quad} \quad 2400 + 900 = \underline{\quad\quad} \quad 3200 + 2500 = \underline{\quad\quad}$$

3 Oblicz.

$$26 + 32 = \underline{\quad\quad} \quad 52 + 15 = \underline{\quad\quad} \quad 4 + 8 = \underline{\quad\quad}$$

$$26 + 33 = \underline{\quad\quad} \quad 52 + 25 = \underline{\quad\quad} \quad 14 + 18 = \underline{\quad\quad}$$

$$26 + 34 = \underline{\quad\quad} \quad 52 + 35 = \underline{\quad\quad} \quad 24 + 28 = \underline{\quad\quad}$$

$$26 + 35 = \underline{\quad\quad} \quad 52 + 45 = \underline{\quad\quad} \quad 34 + 38 = \underline{\quad\quad}$$

$$26 + 36 = \underline{\quad\quad} \quad 52 + 55 = \underline{\quad\quad} \quad 34 + 48 = \underline{\quad\quad}$$

4 Wpisz w okienka odpowiednie liczby.

$$47 = 27 + \boxed{\quad} = 26 + \boxed{\quad} = 25 + \boxed{\quad} = 24 + \boxed{\quad} = 23 + \boxed{\quad}$$

$$47 = 11 + \boxed{\quad} = 21 + \boxed{\quad} = 31 + \boxed{\quad} = 41 + \boxed{\quad}$$

$$47 = 27 + 5 + \boxed{\quad} = 27 + \boxed{\quad} + \boxed{\quad} = 27 + \boxed{\quad} + \boxed{\quad}$$

5 Oblicz.

$$27 + 8 = \underline{\quad\quad} \quad 32 + 11 = \underline{\quad\quad} \quad 14 + 9 = \underline{\quad\quad}$$

$$270 + 80 = \underline{\quad\quad} \quad 321 + 0 = \underline{\quad\quad} \quad 4 + 99 = \underline{\quad\quad}$$

$$2700 + 800 = \underline{\quad\quad} \quad 199 + 1 = \underline{\quad\quad} \quad 4 + 999 = \underline{\quad\quad}$$

$$2700 + 8 = \underline{\quad\quad} \quad 321 + 110 = \underline{\quad\quad} \quad 14 + 99 = \underline{\quad\quad}$$

- 6 Oblicz sumy. Wyniki zapisz w kolejności rosnącej i odczytaj hasło – nazwę często spotykanego w Polsce niejadowitego węża, który ma na głowie dwie żółte plamki.

A $72 + 21 =$ _____

I $77 + 22 =$ _____

C $64 + 37 =$ _____

K $77 + 18 =$ _____

E $82 + 18 =$ _____

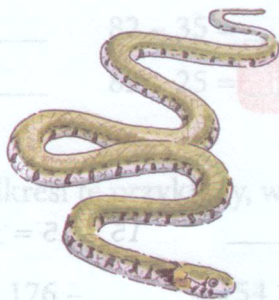
N $49 + 49 =$ _____

Z $42 + 50 =$ _____

O $58 + 39 =$ _____

R $35 + 61 =$ _____

S $48 + 46 =$ _____



Wyniki:

Hasło: _____

- 7 Wpisz w okienka odpowiednie liczby.

+ 4 = 10

73 + = 80

+ 55 = 100

0 + = 10

+ 67 = 70

44 + = 100

+ 7 = 10

51 + = 60

+ 33 = 100

- 8 Wstaw w okienko znak >, < lub =.

a) $15 + 7$ $15 + 6$

b) $37 + 9$ $39 + 7$

c) $28 + 8$ $27 + 3$

- 9 Suma liczb na każdym autobusie wskazuje, do której zajezdni jedzie ten autobus. Pomaluj pojazdy odpowiednimi kolorami.

