

$$\begin{aligned} i) \quad 1,09 + 7,2 : 1\frac{3}{5} &= 1,09 + 7,2 \cdot \frac{5}{8} = \\ &= 1,09 + 4,50 = \mathbf{5,59} \end{aligned}$$

$$\begin{aligned} j) \quad 0,5 \cdot 0,5 + \frac{1}{5} \cdot 1\frac{1}{5} &= 0,25 + \frac{1}{5} \cdot \frac{6}{5} = 0,25 + \frac{6}{25} = \\ &= 0,25 + 0,24 = \mathbf{0,49} \end{aligned}$$

$$\begin{aligned} k) \quad (3,8 - 2,9) \cdot \left(\frac{3}{8} + 0,125\right) &= \\ &= 0,9 \cdot \frac{1}{2} = 0,9 \cdot 0,5 = \mathbf{0,45} \quad \left\{ \frac{9}{20} \right\} \end{aligned}$$

$$\begin{aligned} l) \quad \left(8\frac{1}{3} - 8,1\right) \cdot \left(9 - 4\frac{5}{7}\right) &= \\ &= \left(8\frac{1}{3} - 8\frac{1}{10}\right) \cdot 4\frac{2}{7} = \\ &= \left(8\frac{10}{30} - 8\frac{3}{30}\right) \cdot \frac{30}{7} = \\ &= \frac{7}{30} \cdot \frac{30}{7} = \mathbf{1} \end{aligned}$$

CJU, str. 59

I.

a)  $28,3128 \approx 30$

b)  $28,3128 \approx 28,31$

c)  $28,3128 \approx 28,313$

II.

$$\begin{array}{r} 12,28 \\ 86 : 7 \\ \hline -7 \\ \hline 16 \\ -14 \\ \hline 20 \\ -14 \\ \hline 60 \end{array}$$

$$86 : 7 \approx 12,3$$

III.

$$\frac{8}{11} = 0,(72)$$

9/59(p)

c) NWD(72, 108)

$$\begin{array}{r|l} 72 & 2 \\ 36 & 2 \\ 18 & 2 \\ 9 & 3 \\ 3 & 3 \\ 1 & \end{array}$$

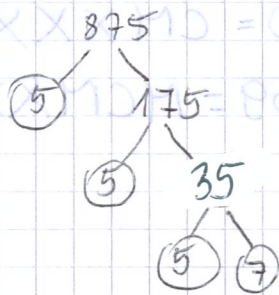
$$\begin{array}{r|l} 108 & 2 \\ 54 & 2 \\ 27 & 3 \\ 9 & 3 \\ 3 & 3 \\ 1 & \end{array}$$

$$72 = 2^3 \cdot 3^2$$

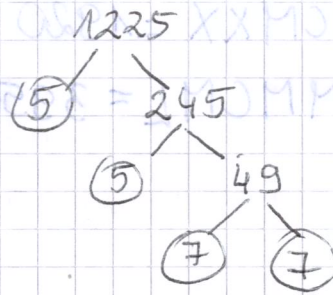
$$108 = 2^2 \cdot 3^3$$

$$\text{NWD}(72, 108) = 2^2 \cdot 3^2 = 4 \cdot 9 = \textcircled{36}$$

d) NWD(875, 1225)



$$875 = 5^3 \cdot 7$$



$$1225 = 5^2 \cdot 7^2$$

$$\text{NWD}(875, 1225) = 5^2 \cdot 7 = 25 \cdot 7 = \textcircled{175}$$

2/79(p)

f) XCI = 91		99 = XCIX
CXC = 190		180 = CLXXX
MCX = 1110		1595 = MDXCV

g) CDX = 410		405 = CDV
CDXXXI = 431		450 = CDL
CDIX = 409		475 = CDLXXV

h) CML = 950		955 = CMLV
MCMXX = 1920		930 = CMXXX
MMMCMXL = 3950		1939 = MCMXXXIX